

Rendered finish, with serious savings



Hardie™ Fine Texture Cladding

Hardie™ Fine Texture Cladding is an efficient and cost-effective alternative to render as it saves time, trades and call-backs.



SAVE TIME

Clad and paint on the same day¹.



SAVE COMPLEXITY

Reduces the number of trades on site.



SAVE COST

Reduce on-the-wall costs compared to rendered brick².



SAVE FROM CRACKS

Set joints replaced with shiplap joints.

Rendered finish, with serious savings



ESTIMATE YOUR SAVINGS
with our Hardie™ Fine Texture
Cladding calculator



Hardie™ Fine Texture Cladding is an efficient and cost-effective alternative to render as it saves time, trades and call-backs.

It is a durable fibre cement panel with an embedded texture which means you can save time and money by cladding and painting on the same day¹. It's a game changer when it comes to simplifying your builds as it requires less trades on site and with less tasks to complete.

With Hardie™ Fine Texture Cladding, you can deliver the modern look your clients want faster and simpler than before.



4 reasons to use Hardie™ Fine Texture Cladding to achieve a modern look



SAVE TIME

Clad and paint on same day¹, so you can complete projects sooner.

- No more waiting around for brickies or renderers because your carpenters can install it.
- No joint compounds or patch filler needed, so there's no drying time.
- No need for primer – the panels are pre-sealed, so you can just roll-on regular acrylic flat paint.



SAVE COST

Reduce on-the-wall costs compared to rendered brick².

- No need to hire trades to set joints or apply acrylic texture coats.
- The shiplap joints can take up minor house movement. Whereas set joints can crack resulting in rectification costs.



SAVE COMPLEXITY

Simplify your builds by reducing the number of trades on site.

- Less coordinating, scheduling, and administration.
- Less mess to clean up without masonry and cement render.
- Less risk of delays.



SAVE FROM CRACKS

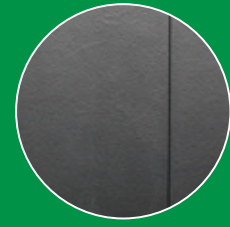
Set joints, which are prone to cracks, have been replaced with shiplap joints.

- Overlapping vertical sheet edges take up minor movement without cracking.



Estimate your savings

1m²



Average Costs

Render Face Brick

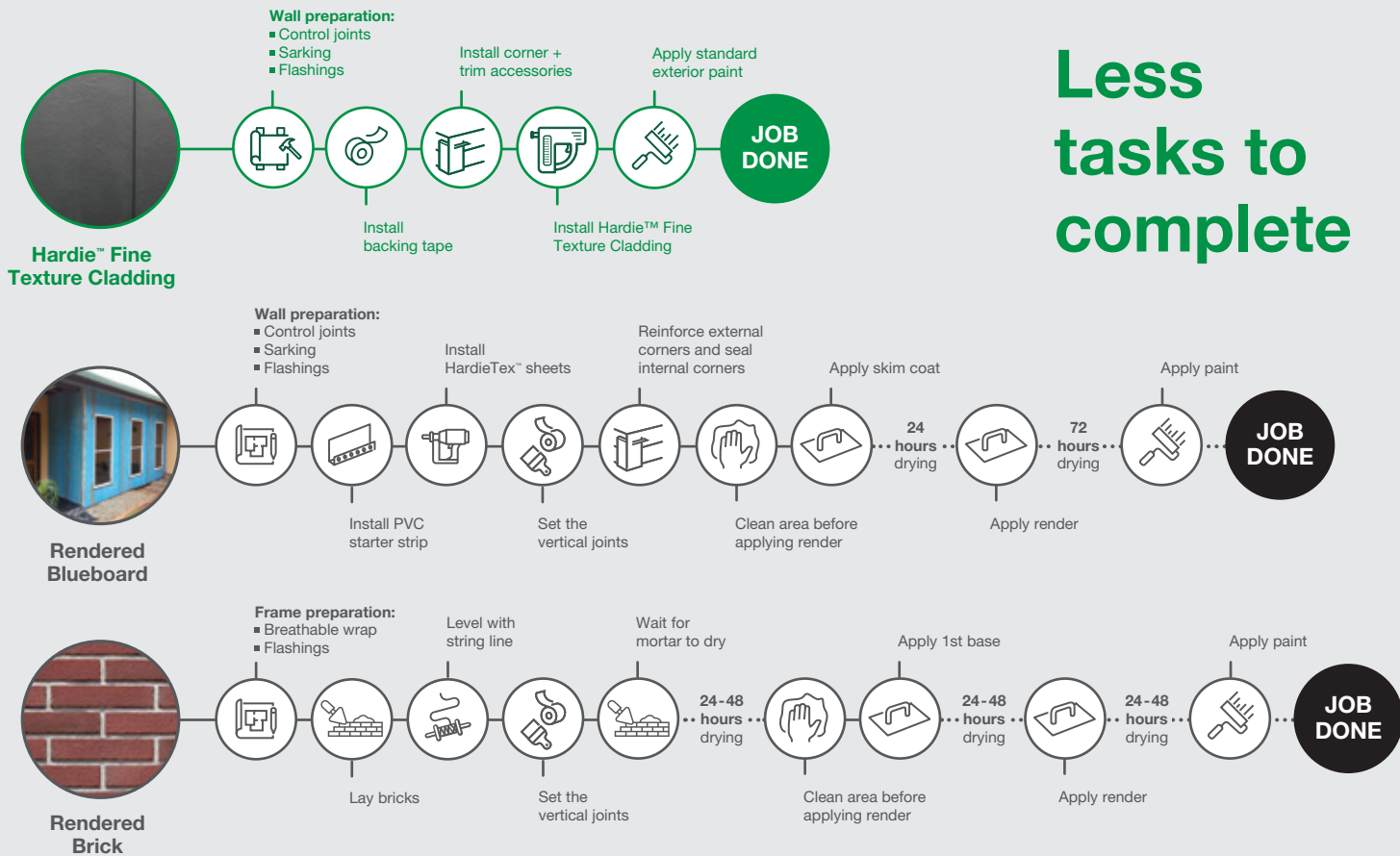
Rendered Blueboard

Hardie™ Fine Texture Cladding

	Render Face Brick	Rendered Blueboard	Hardie™ Fine Texture Cladding
Total est. Labour Cost	\$115.00	\$75.00	\$70.00
Renderer	\$35.00	\$35.00	-
Bricklayer	\$80.00	-	-
Carpenter	-	\$40.00	\$55.00
Painter	-	-	\$15.00
Total est. Material Cost	\$89.08	\$56.10	\$49.91
Product	\$35.88	\$13.89	\$31.31
Fixings	\$14.04	\$2.36	\$18.59
Render / Paint	\$39.16	\$39.85	-
Est. Total	\$204.08	\$131.10	\$119.91

You could save **vs Rendered Face Brick** **\$84.17**
vs Blueboard **\$11.19**

Estimates only. Actual costs will vary. This calculator tool provides estimates of potential costs savings using comparisons and modelled installation costs for a fully built and painted wall (9.0 m long x 2.4 m high + 1 x door + 1 window) using data sourced from Estimating Australia 2022. The reference to "Blueboard" is to the HardieTex™ product. This calculator tool does not provide quotes for costs involved in using Hardie™ Fine Texture Cladding on individual projects, and you should always make your own independent enquiries and assessments about the costs of your project.

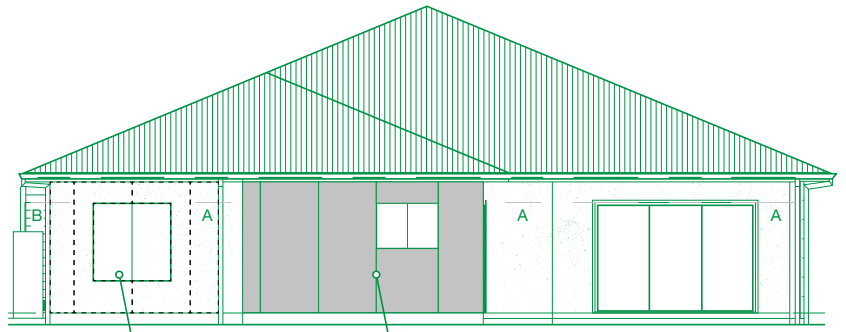


Less tasks to complete

Source: HardieTex™ and Hardie™ Fine Texture Cladding installation guides.
 Note: The above scenario is based on a single story build.

4 steps

for fast and easy installation



Before you start installing Hardie™ Fine Texture Cladding, read the Installation Guide on the James Hardie website, or use the QR code below. It covers all the required components, tools and accessories, design guidance, safe working practices, and warranty information.



Scan here for Hardie™ Fine Texture Cladding Installation Guide

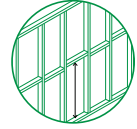
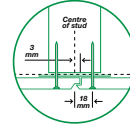
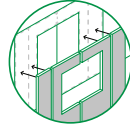
1 Plan the joint layout.



Choose a layout that's aesthetically pleasing.

Make sure the edges of the panels are fully supported by a stud for secure nailing.

Ensure the frame varies by no more than 4mm over 3 meters.



2 Prepare the frame.

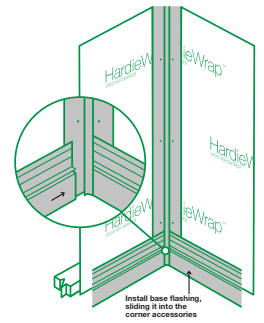
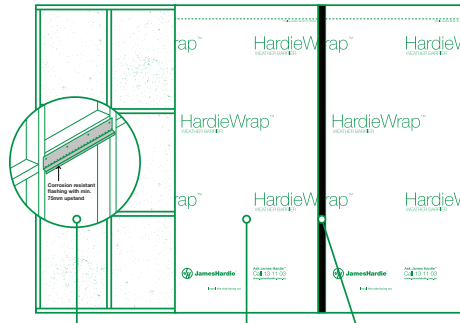


Install the flashings above windows and other openings.

Install HardieWrap™ Weather Barrier.

Install Hardie™ Foam Back Sealing Tape at shiplap joint locations.

Fix corners accessories then base trim.



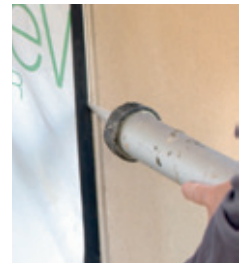
3 Cut and fix the panels.



Use a plunge cut saw, Hardie™ Blade and M class or higher vacuum.

Install the first panel using ND50 stainless steel brads at 125mm centres up to wind categories N3/C1.

Put Hardie™ Joint Sealant on the shiplap edge and install the subsequent panels.



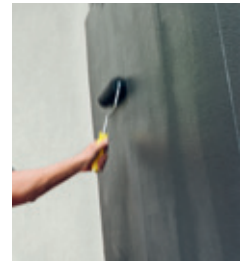
4 Clean-up and paint.



To minimise patching, brads should be flush or under-driven and hand finished.

Clean up wet sealant from the shiplaps or patching with soapy water.

The panels are sealed ready for a water based exterior paint.



*The installation summary refers to fixing direct to a timber frame with stud spacing suitable for N1, N2, N3/C1 wind classifications. For fasteners specification and higher wind classifications see the installation guide.

Endless design possibilities

Redefine style in appealing new ways with Hardie™ Fine Texture Cladding.

Now it's easy to give homeowners the clean lines and modern look they want, without the hassles of render. Combine Hardie™ Fine Texture Cladding with other cladding from the Hardie™ exterior range to give you unlimited design possibilities.

It's Possible™ with James Hardie.

1940s Home Renovation and Extension



Brief: To transform this cottage into a bold modern home with a minimalist look and clean lines.



Walls: Hardie™ Fine Texture Cladding
Paint: Dulux® Domino



Box Modern New Build*

Brief: Develop a contemporary solution for a narrow block.

Walls: Hardie™ Fine Texture Cladding
Paint: Dulux® Lexicon® Quarter and Dulux® Colorbond® Monument®

Scan here for Hardie™
Fine Texture Cladding
Builder Testimonial Video



*Images are concept illustrations

Hardie™ Fine Texture Cladding specifications

Hardie™ Fine Texture Cladding panels are 1200mm wide to suit 600mm stud centres. They come in lengths to suit common wall sizes, reducing waste.

The textured panels adhere to bushfire attack level requirements to BAL40 and fire ratings of up to 60 minutes when used with Hardie™ Smart wall systems.

They're designed to resist damage from moisture and termites as well as cracking that can occur with traditional render.

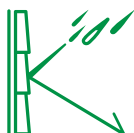


PRODUCT CODE	NAME	LENGTH	WIDTH	THICKNESS
405252	Hardie™ Fine Texture Cladding	2440 mm	1200 mm	8.5 mm
405253	Hardie™ Fine Texture Cladding	3000 mm	1200 mm	8.5 mm
405254	Hardie™ Fine Texture Cladding	3600 mm	1200 mm	8.5 mm
405255	Hardie™ Fine Texture Cladding	2750 mm	1200 mm	8.5 mm



MODERN LOOK

Provides contemporary clean lines and pared-back aesthetics for homes with simple, bold forms.



LASTING BEAUTY

Built for tough Australian conditions. Ready for what life throws at it.



FLEXIBLE COLOUR

Textured, pre-sealed and paint-friendly. Choose a low sheen exterior paint in any colour.



FIRE RESISTANT

Adheres to bushfire attack level requirements to BAL40. Fire rating up to 60 minutes when used with Hardie™ Smart wall systems.



Scan here for Hardie™
Fine Texture Cladding
Product Specifications



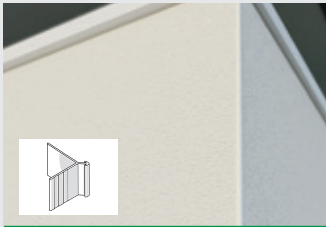
Clever accessories make it easy to build the modern look

New accessories have been launched to help you deliver outstanding design. To be consistent with the subtle vertical panel joints, corner accessories have been designed to minimise interruption of the textured surface.

The new Hardie™ Horizontal Express Joiner and Base Trim assist panel alignment and create a more distinctive 6mm express joint.



RECOMMENDED ACCESSORIES



Hardie™ 9mm Aluminium External Slimline Corner

A sleek external corner that prioritises design with a sharp, minimal edge. It holds the panels tight with just 3.5mm of coverage.

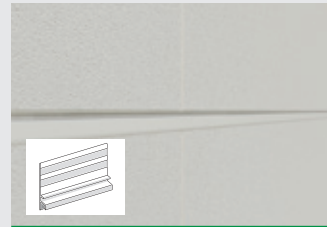
Product Code: 306102



Hardie™ 9mm Aluminium Internal Concave Corner

A concave internal corner that aids design and productivity. Replace inconsistent sealant application with an aluminium extrusion with 10mm of cover to conceal panel edges.

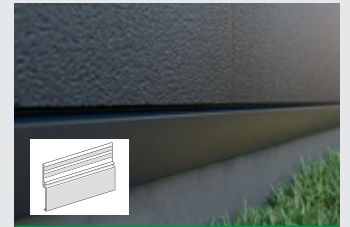
Product Code: 306103



Hardie™ 9mm Aluminium Recessed Horizontal Joiner

A recessed horizontal joiner that creates a 6mm horizontal shadow line.

Product Code: 306190
Connector Product Code: 306191



Hardie™ 9mm Aluminium Base Trim

An elegant aluminium trim for the base which can be used to cover the slab edges or as a detail under balconies and cantilevers. An alignment tab helps installation and creates a 6mm horizontal shadow line between the cladding and the trim.

Product Code: 306105

ALTERNATIVE ACCESSORIES

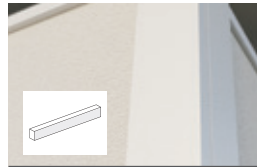
External Corners



Hardie™ 9mm Aluminium External Square Corner

Aluminium extrusion that creates a square edge external corner.

It replaces the Hardie™ 9mm Aluminium External Corner product code 305521.
Product Code: 306100



External Corner using Axent™ Trim

External corner created with 2 Axent™ Trims 45x19mm.

Product Code: 404662

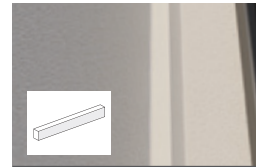
Internal Corners



Hardie™ 9mm Aluminium Internal Corner

Aluminium extrusion that creates an internal box corner.

Product Code: 305520

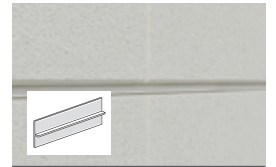


Internal Corner using Axent™ Trim

Internal corner created with 1 Axent™ Trim 45x38mm.

Product Code: 403626

Horizontal Joiner



Hardie™ 9mm Aluminium Horizontal Express Joiner

A horizontal joiner that creates a 6mm horizontal shadow line whilst concealing the edge of the bottom panels.

Product Code: 306104
Connector Product Code: 306110



For information and advice
Call 13 11 03
Visit jameshardie.com.au
Scan QR code

Australia July 2025

© 2025 James Hardie Australia Pty Ltd ABN 12 084 635 558
TM and ® denote trademark or registered mark owned by James Hardie Technology Limited.

Dulux®, Colorbond®, Lexicon®, Monument® and Good Design Award® are registered trademarks of their respective owners.

1. Start painting the same day, as the board comes factory pre-sealed and pre-textured.
2. Comparison based on modelled installation costs for a fully built and painted wall (9.0 m long x 2.4 m high + 1 x door + 1 window) using data sourced from Estimating Australia 2022.