



Installation Guide

Hardie™ Gravis™ Panel
Intertenancy Walls

INTERIOR

Australia June 2026

Make sure your information is up to date.

When specifying or installing Hardie™ products, ensure that you have the current technical information and guides. If in doubt, or you need more information, visit jameshardie.com.au or contact James Hardie on 13 11 03.

CONTENTS

| | | |
|---|--------------------------------------|----|
| 1 | INTRODUCTION | 2 |
| 2 | SAFE WORKING PRACTICES | 3 |
| | Warning | 3 |
| | Recommended safe working practices | 3 |
| | Storage and handling | 3 |
| 3 | COMPONENTS | 4 |
| 4 | SYSTEM PERFORMANCE | 7 |
| 5 | DESIGN CONSIDERATIONS | 8 |
| | Slab and footings | 8 |
| | Framing requirements | 8 |
| | Moisture management | 8 |
| | Control joints | 9 |
| | Wet area construction | 9 |
| | Services | 9 |
| 6 | INSTALLATION REQUIREMENTS | 10 |
| | Panel layout | 10 |
| | Fasteners | 10 |
| | Installation | 10 |
| 7 | WALL INSTALLATION STEPS | 11 |
| 8 | CONSTRUCTION DETAILS | 12 |
| | Intertency wall and junction details | 12 |
| 9 | PRODUCT INFORMATION | 18 |

SCOPE

This guide covers the use of Hardie™ Gravis™ Panel in a residential intertenancy wall application over a seasoned timber wall frame or a light-gauge steel frame installed in a vertical upright application, in accordance the applicable requirements of the National Construction Code (NCC) 2022 (Amdt. 2) and 2025 and subject to relevant state and territory adoption periods.

CODEMARK® CERTIFICATION

The CodeMark® Certification Scheme is a voluntary third-party building product certification scheme that authorises the use of new and innovative products in specified circumstances in order to facilitate compliance with Volume 1 and 2 of the NCC.

The Hardie™ Gravis™ Panel System has been certified under the CodeMark® Certification Scheme (Certificate Number CM40468) and available at www.jameshardie.com.au. This certificate can be provided to building certifiers and other regulatory authorities to facilitate the assessment of the product compliance or used to verify the suitability of the product for certain applications.



1 Introduction

Hardie™ Gravis™ Panel offers a robust solution for intertenancy walls, utilising autoclaved aerated concrete (AAC) to support the fire and acoustic separation required between adjoining dwellings.

The steel-reinforced AAC panels are designed to moderate noise transfer while providing dependable non-combustible performance that meets Australian building standards. Their consistent format supports accurate placement, helping installers achieve alignment and efficiency on low-rise multi-residential projects. Hardie™ Gravis™ Panel contributes to quieter, more comfortable living environments without limiting design flexibility.

This guide details the intertenancy wall build-ups, installation steps and best-practice requirements needed to construct durable, code-compliant walls that perform reliably over time.

IMPORTANT NOTES

1. Failure to install, finish or maintain this product in accordance with applicable building codes, regulations, standards and James Hardie's written application instructions may lead to personal injury, affect system performance, violate local building codes, and void the James Hardie Product Warranty.
2. All warranties, conditions, liabilities (direct, indirect or consequential) and obligations whether arising in contract, tort or otherwise other than those specified in James Hardie Product Warranty are excluded to the fullest extent allowed by law. For the James Hardie Product Warranty information and disclaimers about the information in this guide, visit www.jameshardie.com.au.
3. The builder must ensure the product meets aesthetic requirements before installation. James Hardie will not be responsible for rectifying aesthetic surface variations following installation.

2 Safe Work Practice Recommendations

DANGER - CRYSTALLINE SILICA SUBSTANCE



Hardie™ AAC products contain sand, a source of respirable crystalline silica (RCS), and are a crystalline silica substance for the purposes of Work Health and Safety (WHS) regulations. To minimise exposure to RCS when cutting, drilling, sawing or abrading Hardie™ AAC products and during cleanup, apply the hierarchy of controls and follow James Hardie's safe work practice recommendations set out below.

Additional information and guidance is available in James Hardie's Safety Data Sheets and Best Practice Guide, available at www.jameshardie.com.au and by scanning the QR code below and in the Safe Work Australia Code of Practice:

[Managing risks of respirable crystalline silica in the workplace.](#)

Failure to follow these recommendations to minimise exposure may result in serious injury or death. You should also consider any legal requirements that may apply in respect of any high-risk processing activities being performed by workers. See the SWA Code of Practice and applicable State or Territory regulations that apply where you're working for more information.

CUTTING / PROCESSING

- Uncontrolled cutting / processing of AAC is prohibited by law.
- You **must** use an effective **wet dust suppression** method **or** an effective **on-tool dust extraction** system.
- Always use equipment appropriate to the cutting method used, and compatible with AAC products.

WET CUTTING

Ensure the equipment used is appropriate and fit for purpose including:

- Having an appropriate ingress protection (IP) rating to ensure it is sufficiently waterproof.
- Having a consistent water flow and adequate water pressure during operation.
- Having the water feed attached and adequately directed at the material and/or blade to prevent dust being released.
- All electrical risks are managed in line with the power tool manufacturer's recommendations.

In addition, control other risks as appropriate including:

- Control slip risks arising from surface water.
- Clean up slurry before it dries.

DRY CUTTING

- Always connect the saw to an H or M class vacuum.
- Set blade depth 2–5 mm short of cutting through the underside of the panel to improve dust capture.

WET AND DRY CUTTING

- Always ensure workers wear a properly fitted P2 respirator and are clean shaven or wear a powered air purifying respirator (PAPR).
- Always ensure workers wear appropriate hearing and eye protection.
- Always cut outdoors or in a well-ventilated area.
- Ideally, position the cutting station downwind and at least 3 metres away from other workers.
- Warn other workers in the area of the risk.
- Cut product on a raised work platform at waist height to ensure tooling can be held securely and minimise RCS dust exposure to the operator.
- Job rotate the cutting of panels to minimise individual RCS dust exposures.

CLEAN UP AND GENERAL HOUSE KEEPING

- Poor housekeeping methods that disturb accumulated dust on workplace surfaces can also lead to increased RCS exposure.
 - Always use an M or H class vacuum to clean up dust.
 - Put full vacuum bags and/or filters in a sealed bag before disposal.
 - Clean up dust slurry and put in a sealed bag before it dries.
 - Always ensure workers wear a properly fitted P2 respirator and are clean shaven or wear a powered air purifying respirator (PAPR).
- #### DO NOT:
- Dry sweep – this is prohibited by relevant WHS legislation.
 - Use compressed air or high-pressure water cleaners.
 - Use a general-purpose vacuum cleaner not designed for use with hazardous dusts.

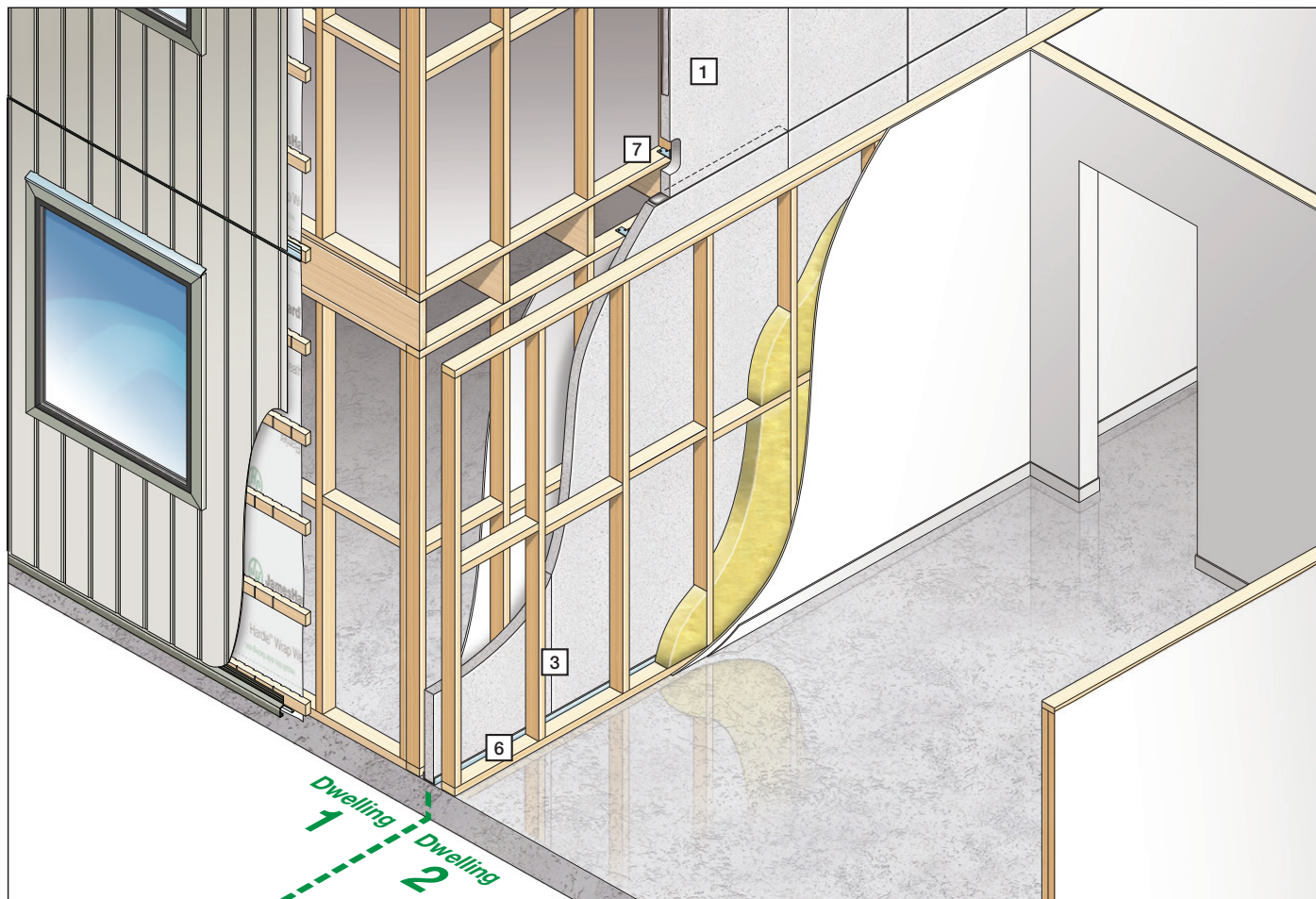
HANDLING

- Whenever possible, use mechanical aids such as trolleys, cranes or forklifts to move the panels on site.
- Position the pallet as close as practicable to the working area or cutting station, reducing the distance the panels need to be transported.
- When moving a panel by hand, to avoid risk of damage to the panel, always carry the panel on its side, not flat.
- Ensure workers wear appropriate gloves when handling AAC products.
- Take care when releasing the straps on pallets. Always brace or restrap opened packs to prevent panels falling.
- Never stack pallets of AAC panels more than two high on a construction site.

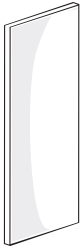






SCAN TO VIEW JAMES HARDIE'S
BEST PRACTICE GUIDE

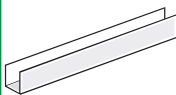
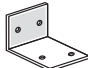

3 Components



COMPONENTS

| 1 Hardie™ Gravis™ Panel | | | | | Product Code | |
|---|---|------------|----------------|-----------------------|--|--------|
|  | Hardie™ Gravis™ Panel is manufactured from Autoclaved Aerated Concrete (AAC), internally reinforced with a corrosion-protected steel mesh. | | | | | |
| | Length (mm) | Width (mm) | Thickness (mm) | Weight per unit (kg)* | Weight per meter (kg/m²)* | |
| | 2200 | 600 | 50 | 45 | 34 | 900001 |
| | 2400 | 600 | 50 | 50 | 34 | 900002 |
| | 2550 | 600 | 50 | 53 | 34 | 900003 |
| | 2700 | 600 | 50 | 56 | 34 | 900004 |
| | 2850 | 600 | 50 | 59 | 34 | 900005 |
| 3000 | 600 | 50 | 62 | 34 | 900006 | |
| 2 Hardie™ Joint Sealant | | | | | | |
|  | Hardie™ Joint Sealant is a general purpose polyurethane exterior grade joint sealant. Pack Size: 20/Box. Coverage: 1.0m/100mL (10mm control joint). | | | | 300mL Cartridge 305534 600mL Sausage 305672 | |
| 3 Hardie™ Gravis™ Adhesive 20kg | | | | | | |
|  | Hardie™ Gravis™ Adhesive is designed for bonding Hardie™ Gravis™ Panels at both vertical and horizontal joints. Pack size 20kg. | | | | 700001 | |
| 4 Hardie™ Gravis™ Patch 10kg | | | | | | |
|  | Hardie™ Gravis™ Patch is used for repairing minor chips or damage to Hardie™ Gravis™ Panel. Pack size 10kg. | | | | 700002 | |
| 5 Hardie™ Gravis™ Anti-Corrosion Sealer 0.5L | | | | | | |
|  | Hardie™ Gravis™ Anti-Corrosion Sealer is used to protect the exposed ends of reinforcement exposed during panel cutting. Bottle size 500mL. | | | | 700003 | |





* Panel weights are based on 35% moisture content at time of handling/install.

| | | |
|---|---|--------|
| 6 Hardie™ Gravis™ Deflection Track | | |
|  | Hardie™ Gravis™ Deflection Track is installed at the top and bottom of Hardie™ Gravis™ Panel - Wall to allow vertical movement between Hardie™ Gravis™ Panel and the structure above. It accommodates slab or floor movement without transferring load into non-loadbearing AAC walls, helping prevent cracking and maintain system performance. | 700024 |
| 7 Hardie™ Gravis™ Aluminium Angle Bracket | | |
|  | Hardie™ Gravis™ Aluminium Angle Bracket is used for securely fixing Hardie™ Gravis™ Panel - Wall to internal framing. | 700023 |
| 8 Hardie™ Internal Lining | | |
|  | Hardie™ internal lining or selected exterior cladding products can be used on the internal side of the wall. To see our range of suitable products, visit jameshardie.com.au or contact James Hardie on 13 11 03. Alternatively, standard plasterboard or similar can be used. Please note that if a specific Fire Resistance Level (FRL), acoustic, or thermal performance is required, minimum system requirements will apply. For more details, refer to the Systems Performance section on page 7. | |

NOTE:

When using alternative products to the ones supplied by James Hardie, the project engineer or qualified person must ensure the product provides at an equivalent or greater performance and meets the relevant NCC requirements.

COMPONENTS NOT SUPPLIED BY JAMES HARDIE

| | | |
|---|--|--|
| Foam Backing Rod | | |
|  | A 15mm diameter backing rod is to be fixed into vertical control joints. | |
| Insulation | | |
|  | Wall insulation must be included between each stud to achieve the required R-Value, acoustic performance and Fire Resistance Level (FRL) when required. Refer to the systems descriptions on Page 7 for further information. | |
| Sealant or Fire Rated Sealant | | |
|  | Regular Sealant or Fire-rated Sealants are required to seal gaps and joints. Fire-rated Sealants are engineered and tested to prevent the spread of fire and smoke through these gaps and joints, while regular sealants do not offer this protection. | |
| Non-Compressible Packer | | |
|  | A Non-Compressible Packer is to be installed at horizontal joints between panels. Refer to the systems descriptions on Page 7 for further information. | |

3 Components

REQUIRED TOOLS

| | |
|--|---|
| Drill fitted with Stirrer | |
|  | Electric drill with fitted stirrer used to mix Hardie™ Gravis™ Adhesive. |
| Notched Trowel | |
|  | Used to apply the adhesive to the panel edges. The trowel must match the Hardie™ Gravis™ Panel thickness. |
| Panel Lifters | |
|  | Used to carry and handle Hardie™ Gravis™ Panel. |
| Sand Float | |
|  | Used to remove excess adhesive and smoothen the joints. |
| Levelling Plane | |
|  | Used to smoothen the Hardie™ Gravis™ Panel surface if needed. |
| M or H Class Vacuum | |
|  | For dust extraction when cutting Hardie™ Gravis™ Panel. |
| Saw or suitable AAC Saw | |
|  | For Dust extraction when cutting Hardie™ Gravis™ Panel. Fitted with a suitable diamond turbo blade and dust extraction. |

4 System Performance

Non-Combustibility and Fire Rated Walls

Hardie™ Gravis™ Panel is classified as non-combustible and, when used as part of an approved system, can achieve Fire Resistance Level (FRL) of up to 90/90/90 when designed and constructed in accordance with the requirements outlined in Table 2 with the internal linings specified in Table 1. When an FRL is required, ensure the control joints used match or

exceed the performance of the wall system, as outlined on page 9 of this document.

A range of Fire Resistance Level (FRL) can be achieved by combining the wall systems listed in Table 2 with the internal linings specified in Table 1.

TABLE 1

| 50mm Hardie™ Gravis™ Panel Fire Resistance Level (FRL) | |
|--|----------|
| Wall Internal Lining Both Sides | FRL |
| Min. 6mm Hardie™ Fibre Cement | 90/90/90 |
| 10mm Standard Plasterboard | 90/90/90 |

Acoustic

Compliance with the sound insulation performance provisions of the National Construction Code (NCC) can be achieved either by construction in accordance with the Deemed to-Satisfy Provisions or on-site testing. The table below shows the acoustic performance of various wall configurations that comply with NCC acoustic insulation requirements.

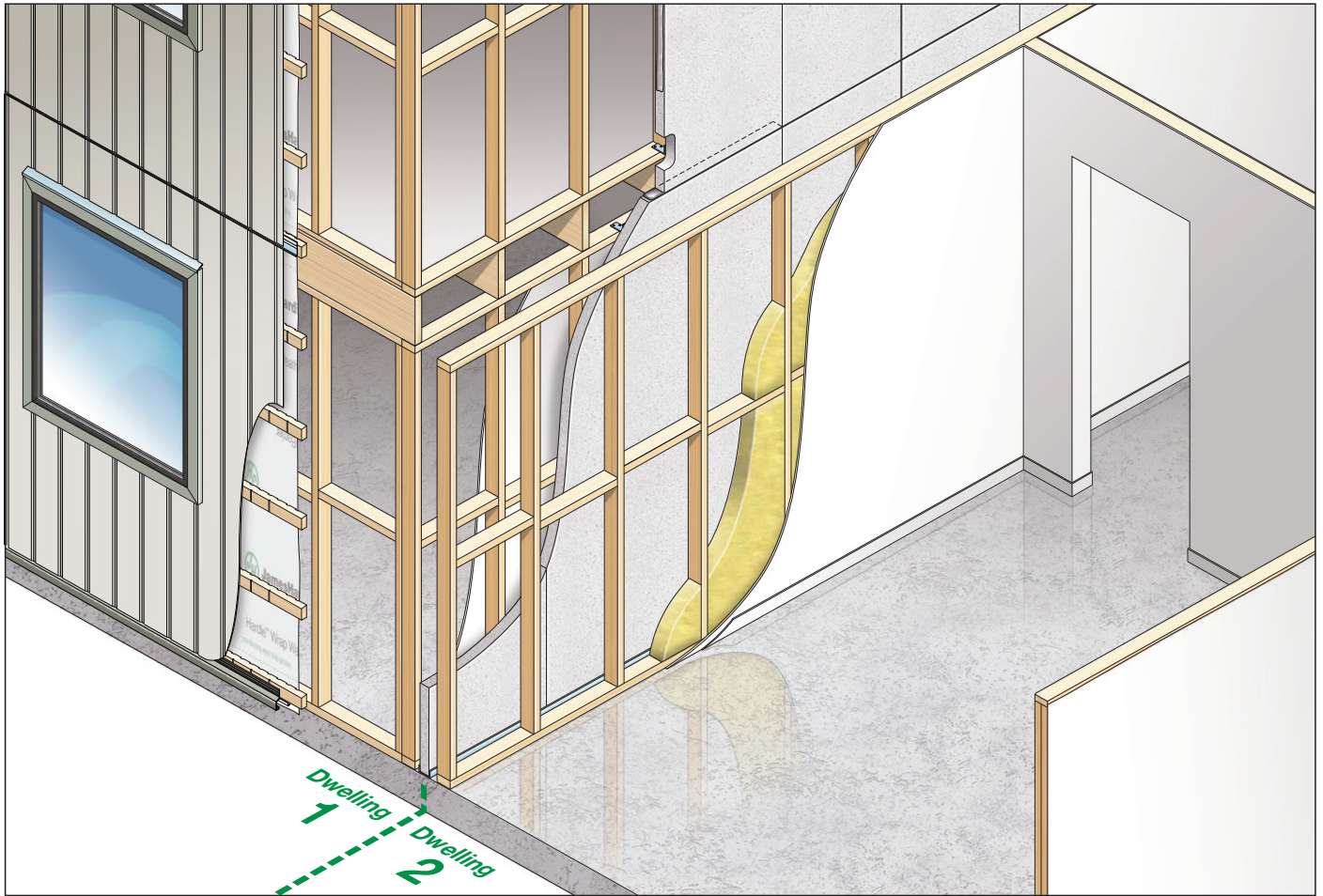
TABLE 2

| 50mm Hardie™ Gravis™ Panel Intertency System Performance | | | | |
|--|----------|-----------------|--|--------------------------|
| System | Frame | | | Acoustic (Rw / Rw + Ctr) |
| | Material | Stud Depth (mm) | Internal Lining | |
| JH-I01 | Timber | 70 | 10mm Standard Plasterboard both sides | 59 / 42 |
| JH-I02 | | | 13mm Standard Plasterboard on one side and 13mm Fire Rated Plasterboard on the other | 66 / 52 |
| JH-I03 | | | 13mm Standard Plasterboard on one side and 9mm Hardie™ Fibre Cement on the other | 68 / 53 |
| JH-I04 | | | 9mm Hardie™ Fibre Cement on one side and 6mm Hardie™ Fibre Cement on the other | 67 / 53 |
| JH-I05 | Timber | 90 | 10mm Standard Plasterboard both sides | 63 / 46 |
| JH-I06 | | | 10mm Standard Plasterboard on one side and 13mm Plasterboard on the other | 65 / 51 |
| JH-I07 | | | 10mm Standard Plasterboard on one side and 6mm Hardie™ Fibre Cement on the other | 65 / 51 |
| JH-I08 | | | 6mm Hardie™ Fibre Cement on both sides | 68 / 53 |
| JH-I09 | Steel | 76 | 10mm Standard Plasterboard Both Sides | 60 / 43 |
| JH-I10 | | | 13mm Standard Plasterboard Both Sides | 65 / 51 |
| JH-I11 | | | 13mm Standard Plasterboard on One Side and 13mm Fire Rated Plasterboard on the other | 67 / 53 |
| JH-I12 | | | 6mm Hardie™ Fibre Cement on both sides | 65 / 51 |
| JH-I13 | Steel | 92 | 10mm Standard Plasterboard Both Sides | 63 / 46 |
| JH-I14 | | | 10mm Standard Plasterboard on one side and 13mm Plasterboard on the other | 65 / 51 |
| JH-I15 | | | 10mm Standard Plasterboard on one side and 6mm Hardie™ Fibre Cement on the other | 65 / 51 |
| JH-I16 | | | 6mm Hardie™ Fibre Cement on both sides | 68 / 53 |

NOTES:

- All steel frames require minimum 0.55bmt.
- All systems highlighted in bold, meet the minimum Rw+Ctr required on the National Construction Code (≥50)
- All systems consider a stud spacing at 450mm centres.
- All wall linings must have a minimum density [kg/m³] of:
 - 10mm Standard Plasterboard - 5.7kg/m³
 - 13mm Standard Plasterboard - 8.1kg/m³
 - 13mm Fire Rated Plasterboard - 10.5kg/m³
 - 16mm Fire Rated Plasterboard - 12.5kg/m³

5 Design Considerations



SLAB AND FOOTINGS

The slab and footings on which the building is situated must comply with articulated masonry veneer construction as per AS 2870 'Residential slabs and footings – Construction' or AS3600 Concrete Structures, and the requirements of the NCC. Seek local engineering advice, especially in areas with reactive ground conditions.

FRAMING REQUIREMENTS

Hardie™ Gravis™ Panel can be installed in conjunction with either timber or light gauge domestic type steel framing. The framing used must comply with the relevant building regulations, framing manufacturer's specifications, requirements outlined on this guide and the relevant standards, which are:

- Timber: AS1684 - Residential Timber-framed Construction
- Steel: NASH standard for Residential and Low-Rise Steel Framing Part 1: Design Criteria.

In addition, the framing materials used must have the level of durability appropriate for the relevant climate and expected service life. Refer to Table 3 for further information about the minimum framing specifications required.

TABLE 3

| Framing Requirements | | |
|----------------------|--------|-------------|
| Type | Timber | Steel |
| BMT | N/A | 0.75 to 1.6 |
| Grade | MPG10 | G550 |
| Min. Stud Width | 35mm* | 32mm |
| Min. Stud Depth | 70mm | 64mm |
| Nogging Spacing | 1350mm | 1350mm |

MOISTURE MANAGEMENT

It is the responsibility of designer or specifier to identify moisture related risks associated with any particular building design. Wall construction design must effectively manage moisture, accounting for both the interior and exterior environments of the building, particularly in buildings that have a higher risk of wind driven rain penetration or that are artificially heated or cooled.

Materials, components and their installation that are used to manage moisture in framed wall construction must, at a minimum, comply with the requirements of relevant standards and the NCC.

CONTROL JOINTS

Buildings and materials move due to various factors like support structure movement, thermal expansion, and differential movements, these movements must be accommodated to prevent issues.

Horizontal Control Joints

Control joints must be installed at horizontal junctions, between the upper and lower Hardie™ Gravis™ Panel. This joint must be constructed in accordance with Figures 1, 2 and 3 and use standard or fire rated sealant as required, based on the project's performance requirements.

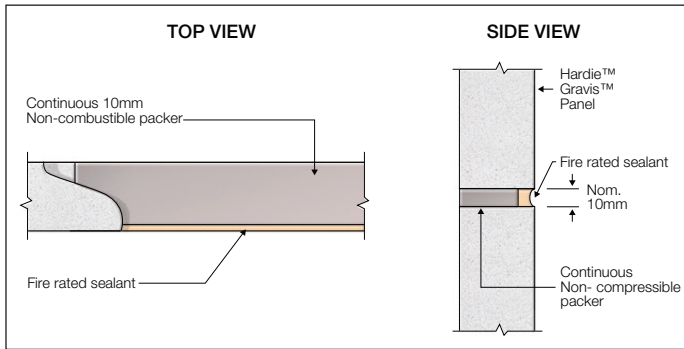


FIGURE 1 HORIZONTAL CONTROL JOINT - OPTION 1 FRL : 60min

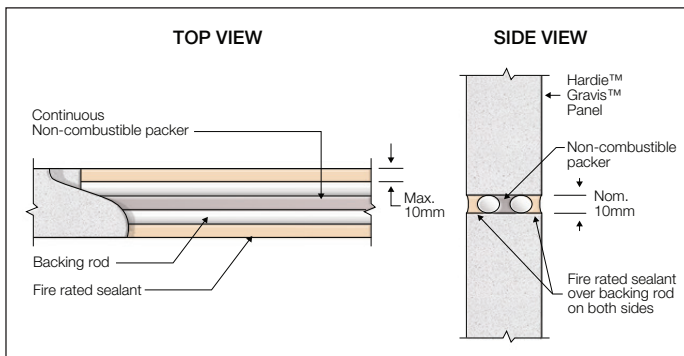


FIGURE 2 HORIZONTAL CONTROL JOINT - OPTION 2 FRL : 90min

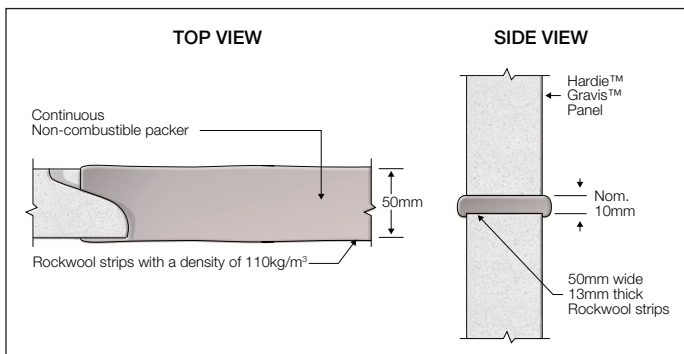


FIGURE 3 HORIZONTAL CONTROL JOINT - OPTION 3 FRL : 90min

Vertical Control Joints

Buildings and materials move due to various factors like support structure movement, thermal expansion, and differential movements, these movements must be accommodated to prevent issues.

Vertical control joints must be spaced at maximum 6m, must align with additional structural control joints and also be included between Hardie™ Gravis™ Panel Intertency Wall System and other building materials. The vertical control joints must follow the construction requirements outlined on Figure 4.

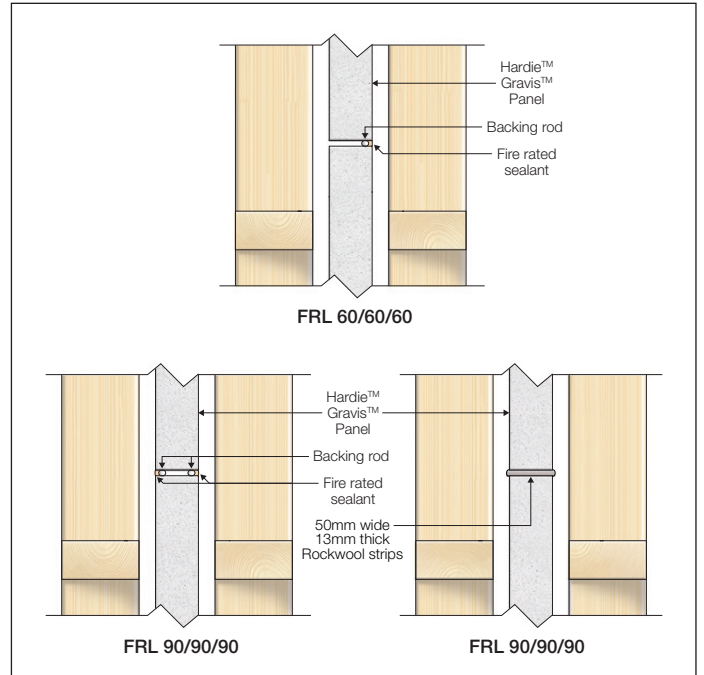


FIGURE 4 VERTICAL CONTROL JOINT - FRL OPTIONS

WET AREA CONSTRUCTION

When installing Hardie™ Gravis™ Panel Intertency Wall System adjacent to wet areas, the internal lining must have the appropriate level of durability for its intended use. The walls must be waterproofed in accordance with the National Construction Code (NCC). Additionally, the internal lining must meet the minimum specifications required to achieve the necessary fire resistance, acoustic, and thermal performance.

SERVICES

Electrical and plumbing services must be installed through the wall frame and must not be fixed to Hardie™ Gravis™ Panel. Additionally, the plumbing must meet the acoustic requirements outlined in the National Construction Code (NCC). If services need to penetrate Hardie™ Gravis™ Panel, additional treatments or systems may be required to maintain the desired Fire Resistance Level (FRL), acoustic, or thermal performance. These may include fire-rated sealants or fire-stopping systems. The project designer must ensure all necessary measures are included to maintain the required wall performance.

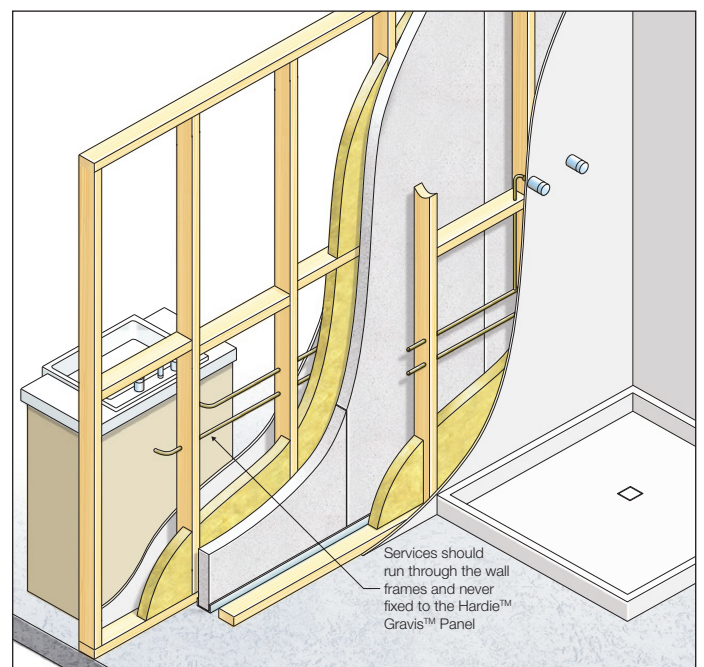


FIGURE 5 ELECTRICAL AND PLUMBING SERVICES

6 Installation Requirements

PANEL LAYOUT

Hardie™ Gravis™ Panel is to be installed in a vertical upright orientation over a seasoned timber or steel frame (refer to Page 8 for framing requirements).

When planning the wall layout, it is important to consider the location of vertical and horizontal joints, ensuring the correct panel sizes are used.

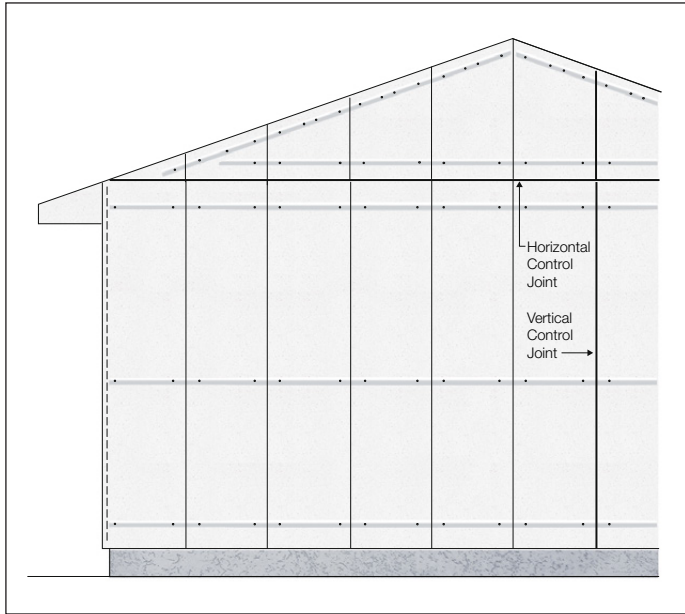


FIGURE 6 TYPICAL SINGLE STOREY PANEL LAYOUT

FASTENERS

Fastener Durability

All fastener must be Class 3 or 4, have the appropriate level of durability and be fully compatible with all other materials required for the intended project.

TABLE 4

| Fastener Requirements for fixing Hardie™ Gravis™ Panel to Brackets | | | |
|--|---|-------------------------|----------------------|
| Application | Timber Frame | Steel Frame | Socket Type |
| Fix Aluminium Brackets to Top and Bottom Plates | 2/25 x 2.5 mm galvanized nails or 2/12-11 x 35 mm hex head type 17 screws | 2/14-10 hex head screws | 3/8" Hex Mag. Socket |
| Fix Aluminium Brackets to Hardie™ Gravis™ Panel | 2/14-10 hex head screws 40mm long | | 3/8" Hex Mag. Socket |

INSTALLATION

Hardie™ Gravis™ Panel must be fixed to the top and bottom plates using the designated aluminium brackets, spaced at a maximum of 600mm centres and within 50mm of the centre line of each panel.

When a deflection head track or a continuous aluminium angle is used to fix the panel base to the slab on ground floors, aluminium brackets are not required. The aluminium brackets must be fixed to both the panels and the frame using the recommended fasteners listed in Table 4 of this guide.

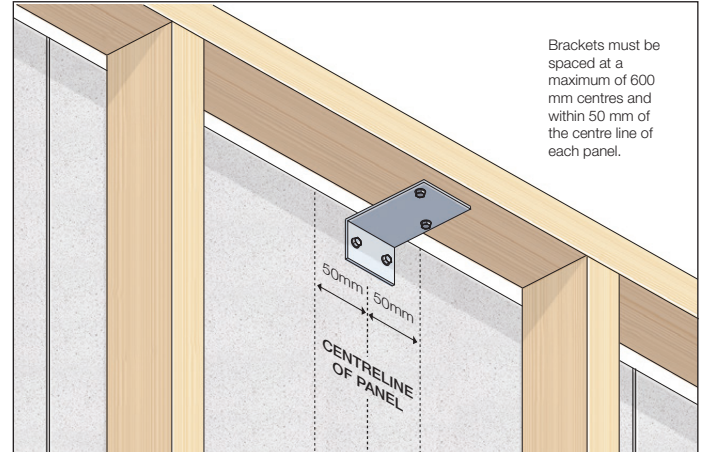


FIGURE 7 POSITIONING OF ALUMINIUM WALL BRACKETS

7 Intertenancy Wall Installation Steps

STEP 1 Set the slab and first frame

Ensure your frame is square, maximum tolerance of 4mm in 3000mm length

STEP 2 Plan the location of control joints

Control joints

STEP 3 Cut the panels to size

Coat any exposed steel reinforcing

STEP 4 Fix the deflection head track to the slab

STEP 5 Place the first panel in the head track

STEP 6 Fix the wall bracket to the top plate of the frame and the panel, within 50mm from the centre line

STEP 7 Apply adhesive to the edge of the installed panel

STEP 8 Place the second panel in position and butt against the first one

STEP 9 Fix the second panel to the frame using the wall brackets and repeat the process

STEP 10 Install the opposite frame

Install the opposite frame

STEP 11 Fix the wall brackets from the second frame into the panel

STEP 12

If installing a second storey, install the horizontal control joint and repeat the process, fixing the panels to the top and bottom plates using the brackets.

8 Construction Details

INTERTENANCY WALL AND JUNCTION DETAILS

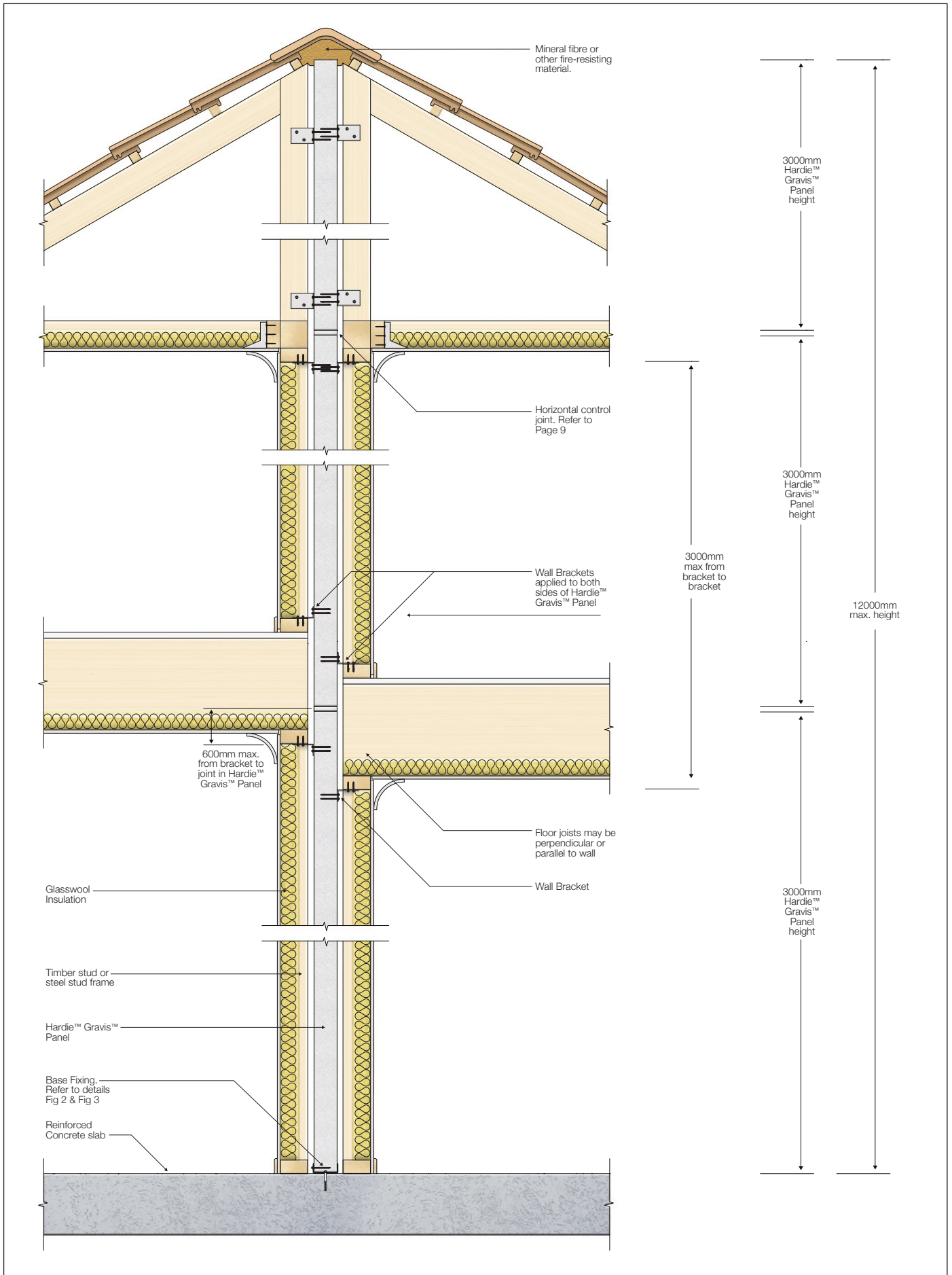


FIGURE 1 VERTICALLY ALIGNED INTERTENANCY DISCONTINUOUS WALL

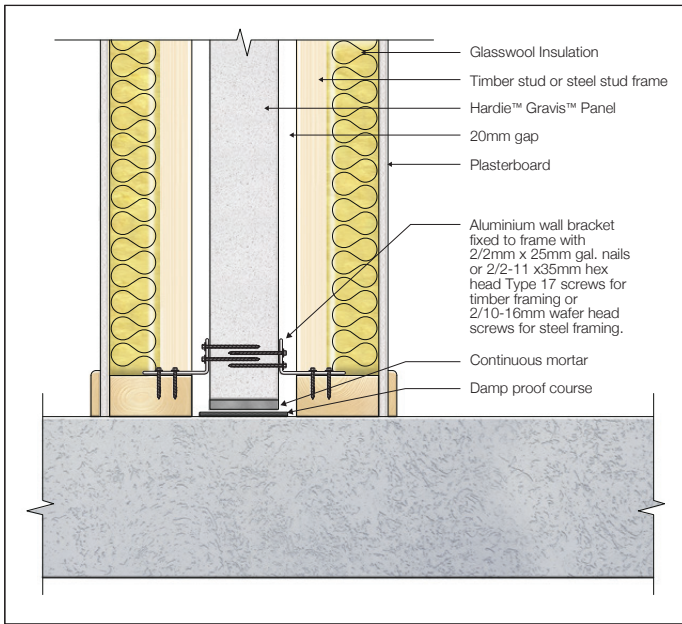


FIGURE 2 BASE CONNECTION FOR VERTICALLY ALIGNED INTERTENANCY DISCONTINUOUS WALL - OPTION 1

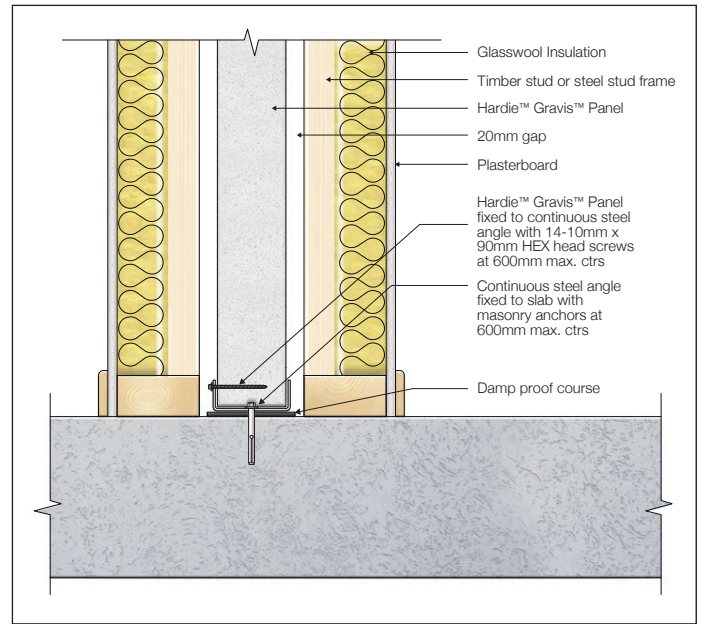


FIGURE 3 BASE CONNECTION FOR VERTICALLY ALIGNED INTERTENANCY DISCONTINUOUS WALL - OPTION 2

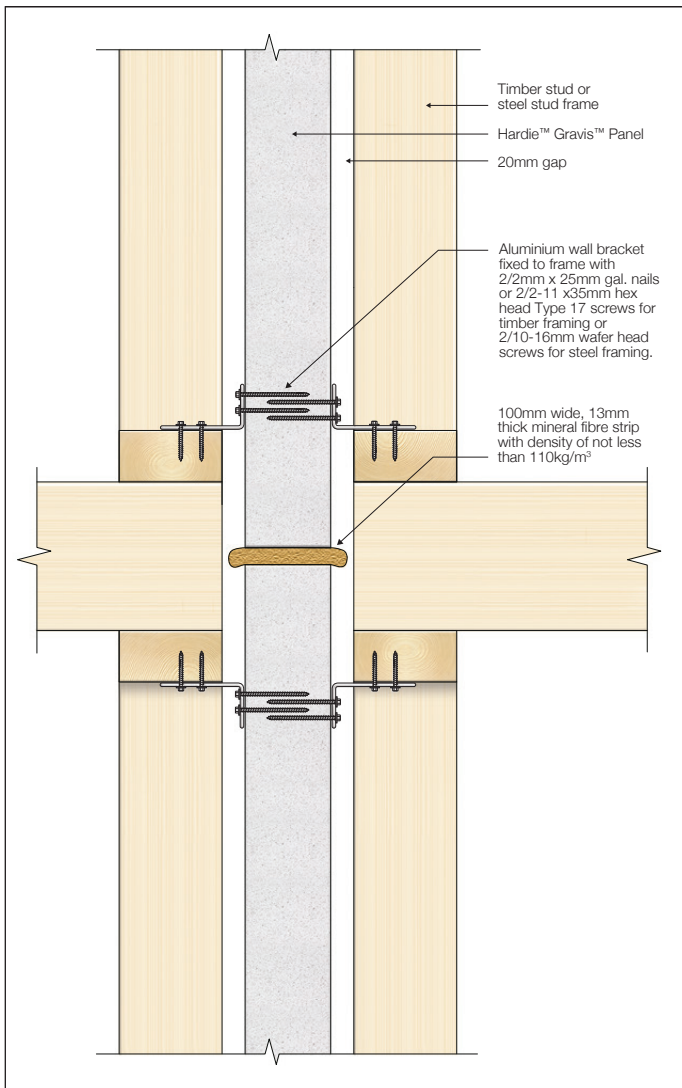


FIGURE 4 HORIZONTAL JOINT FIXING FOR VERTICALLY ALIGNED INTERTENANCY DISCONTINUOUS WALL - OPTION 1

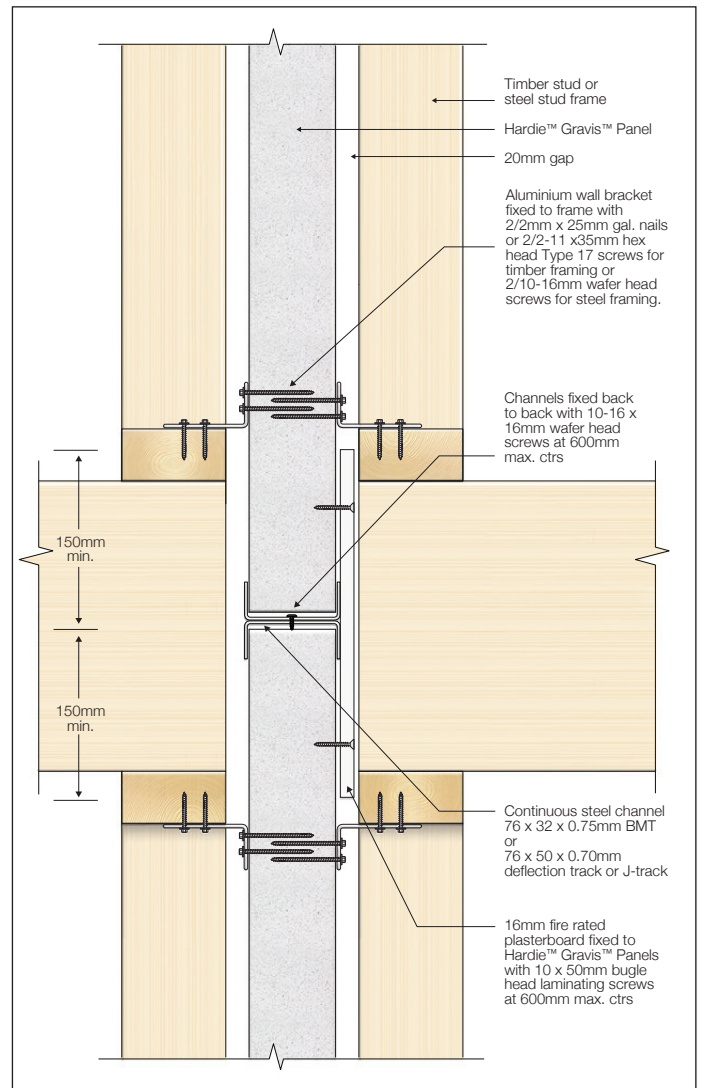


FIGURE 5 HORIZONTAL JOINT FIXING FOR VERTICALLY ALIGNED INTERTENANCY DISCONTINUOUS WALL - OPTION 2

INTERTENANCY WALL AND JUNCTION DETAILS CONT.

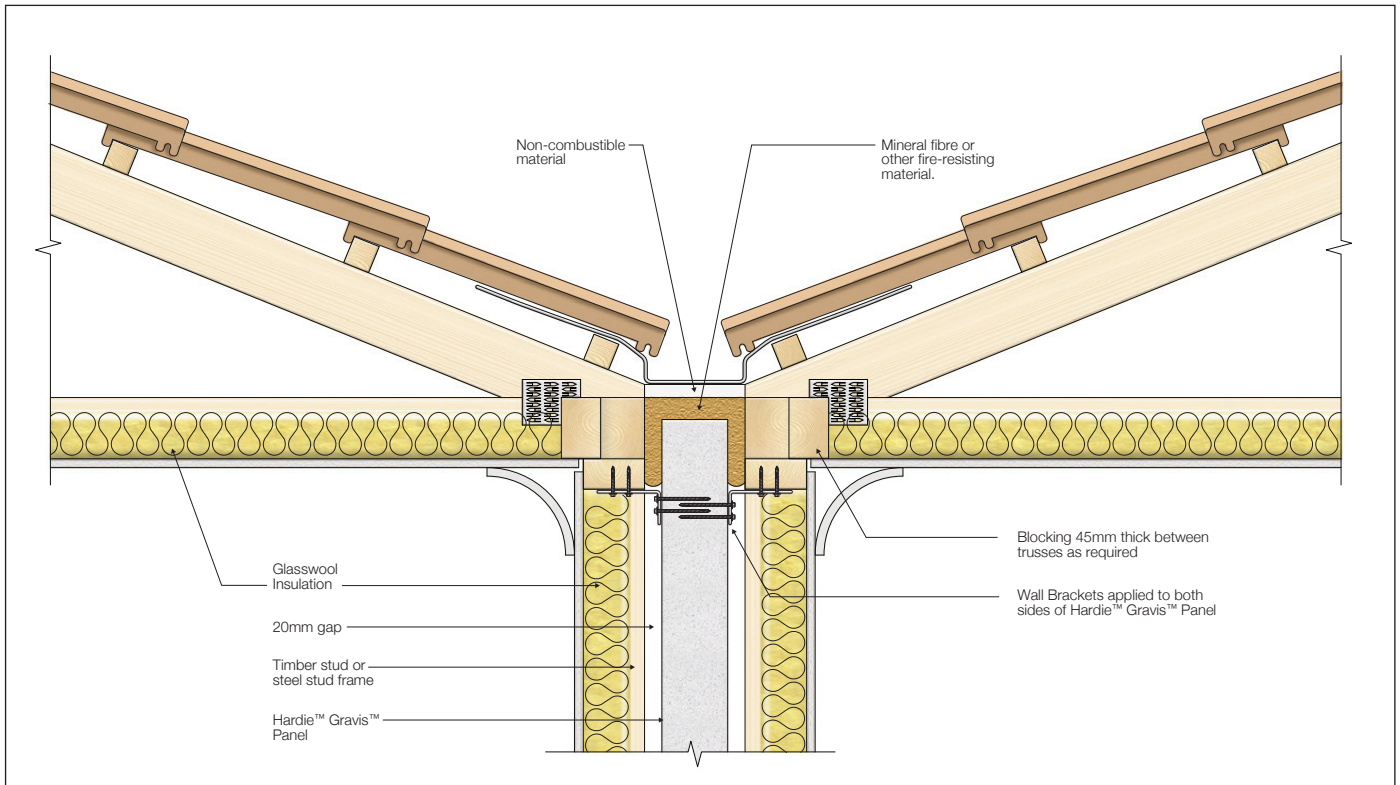


FIGURE 6 ROOF VALLEY FOR VERTICALLY ALIGNED INTERTENANCY DISCONTINUOUS WALL SYSTEM

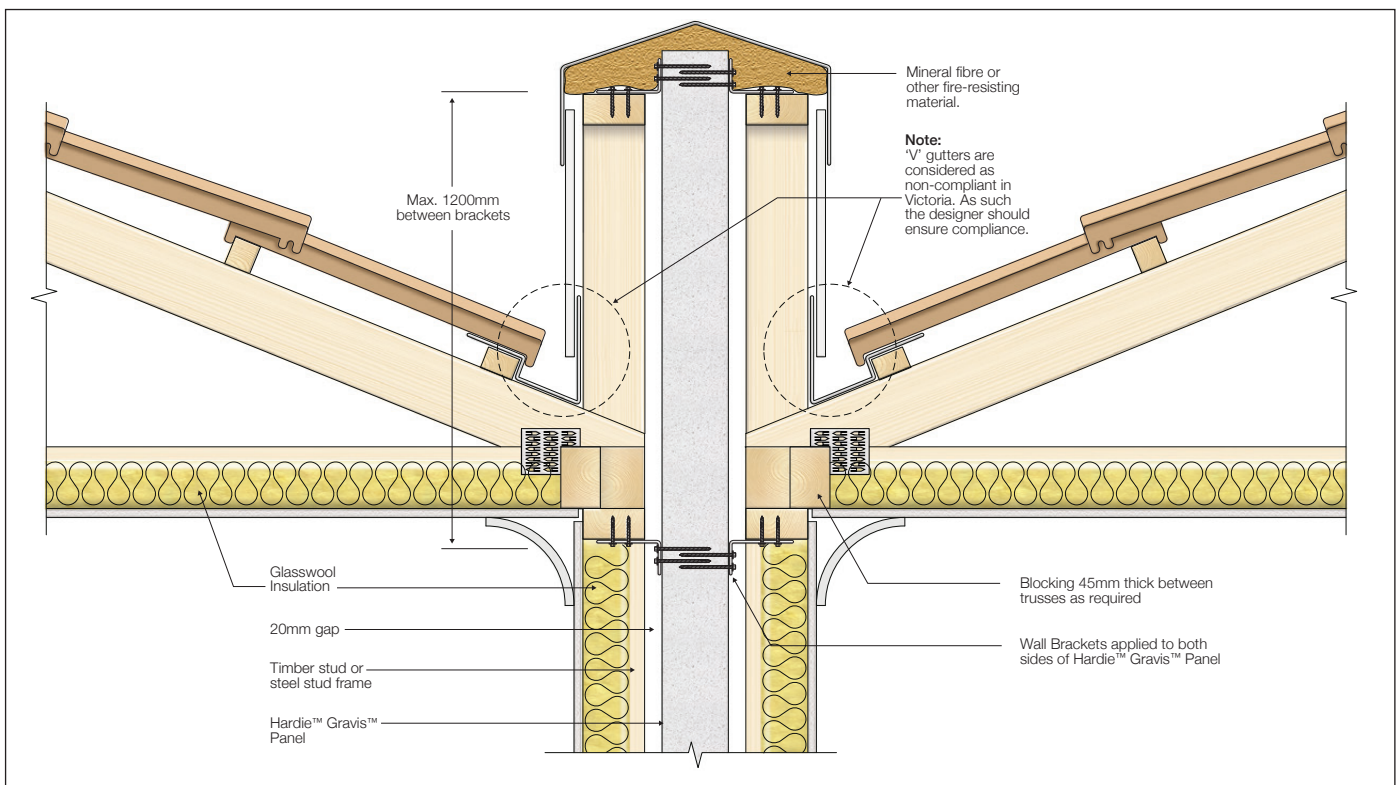


FIGURE 7 ROOF PARAPET FOR VERTICALLY ALIGNED INTERTENANCY DISCONTINUOUS WALL SYSTEM

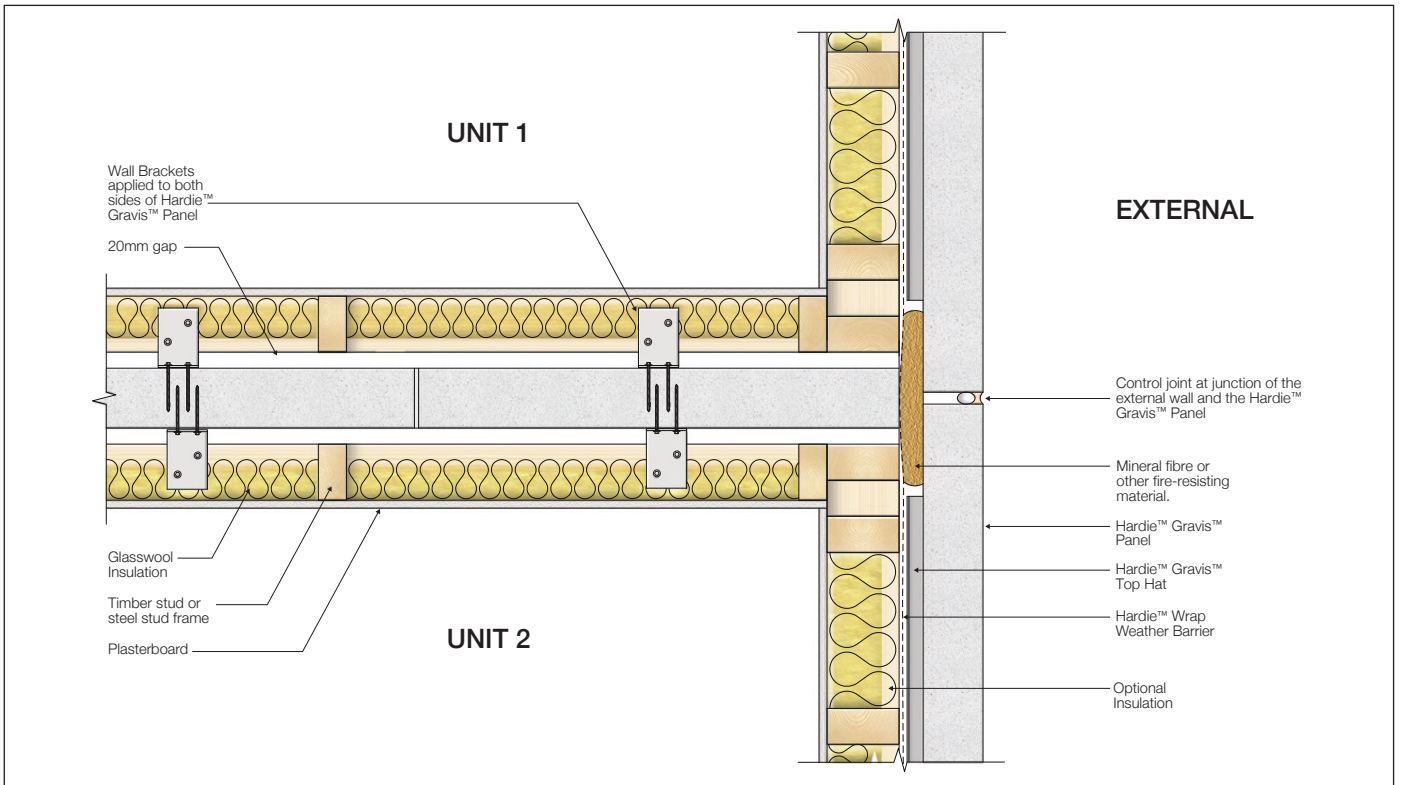


FIGURE 8 EXTERNAL WALL JUNCTION FOR VERTICALLY ALIGNED INTERTENANCY DISCONTINUOUS WALL SYSTEM

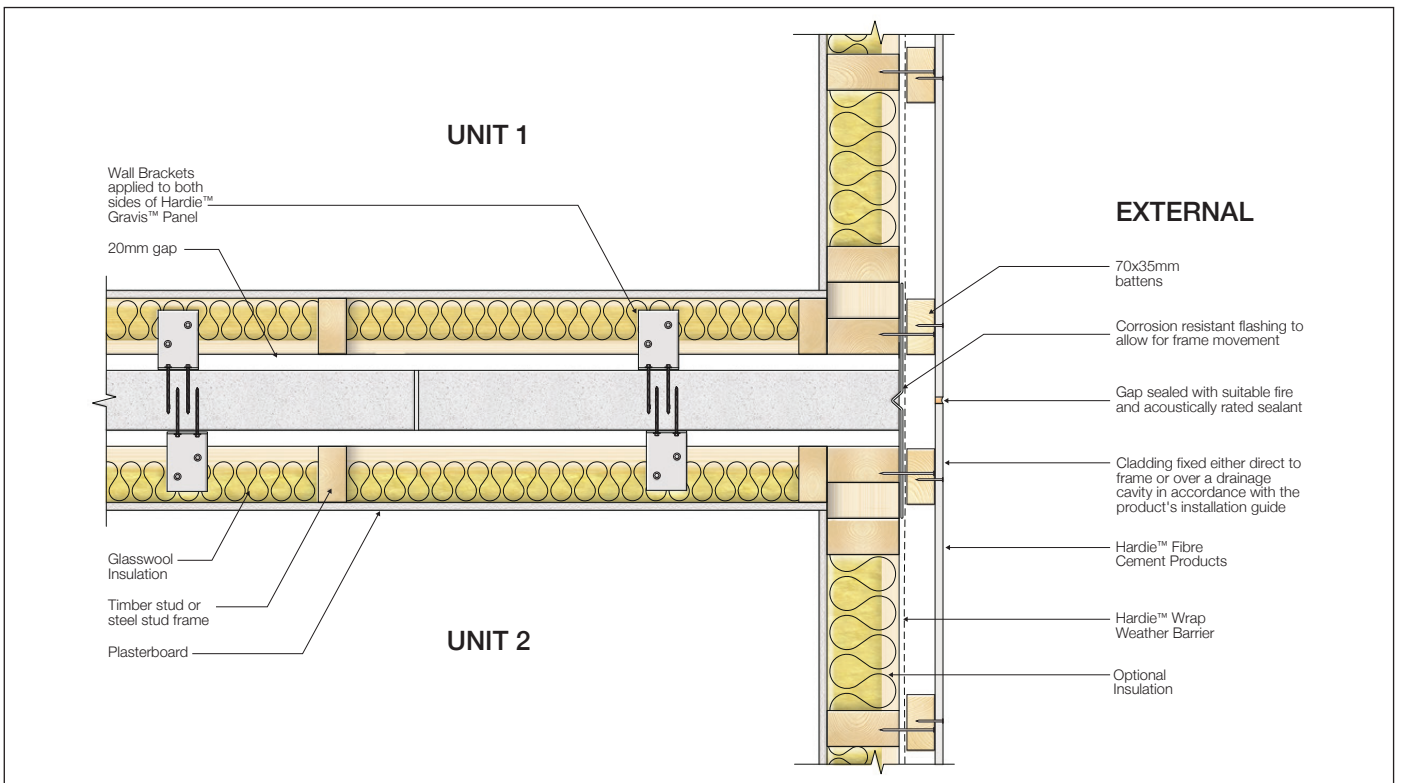


FIGURE 9 EXTERNAL WALL JUNCTION FOR VERTICALLY ALIGNED INTERTENANCY DISCONTINUOUS WALL SYSTEM WITH EXTERNAL FC CLADDING

INTERTENANCY WALL AND JUNCTION DETAILS CONT.

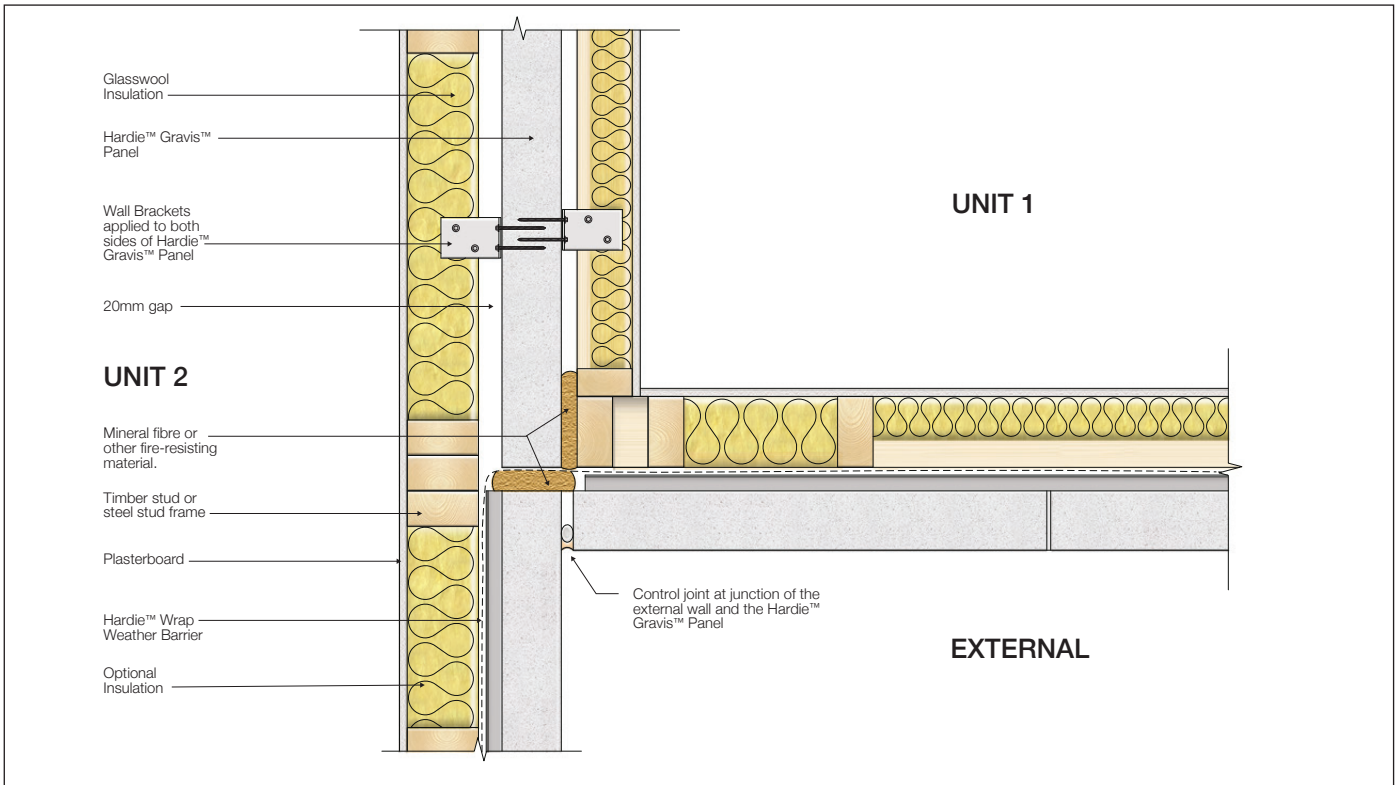


FIGURE 10 EXTERNAL WALL CORNER FOR VERTICALLY ALIGNED INTERTENANCY DISCONTINUOUS WALL SYSTEM

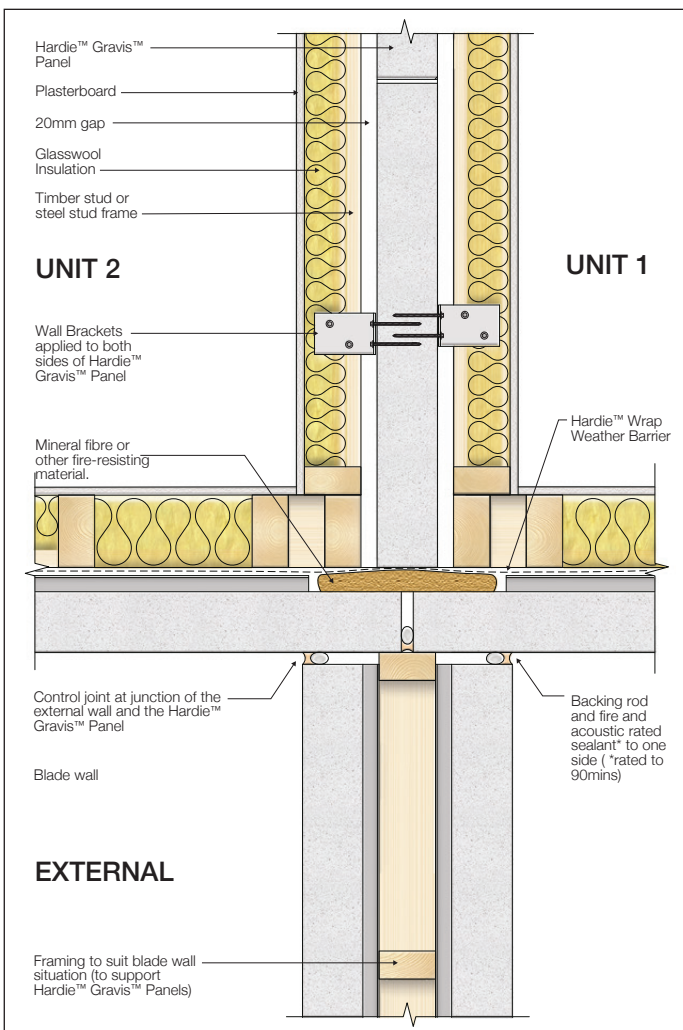


FIGURE 11 BLADE WALL JUNCTION FOR VERTICALLY ALIGNED INTERTENANCY DISCONTINUOUS WALL

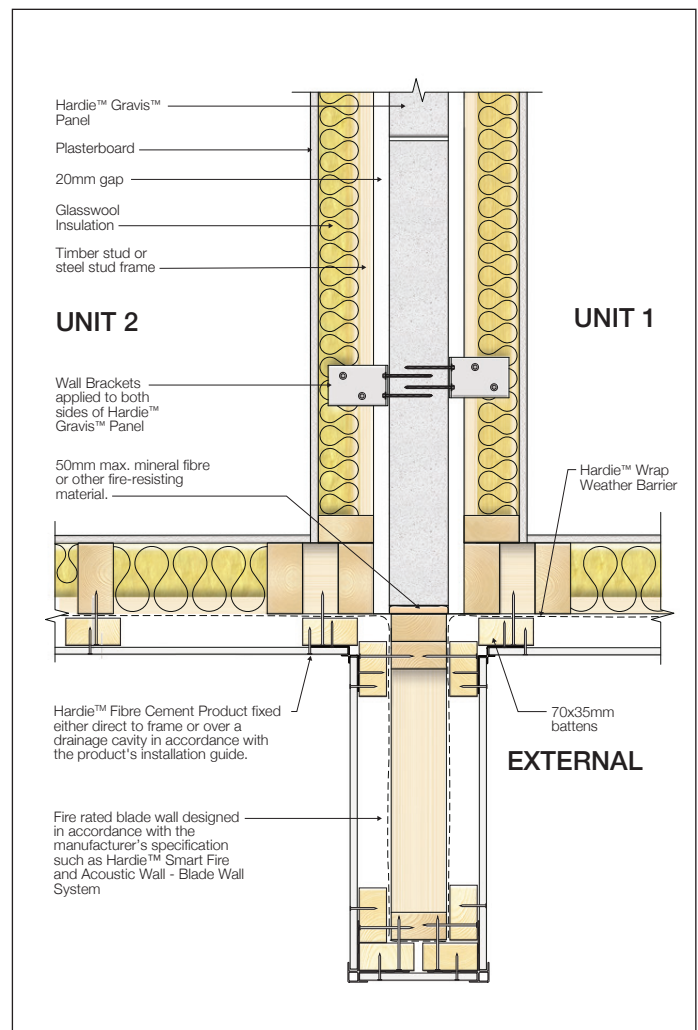
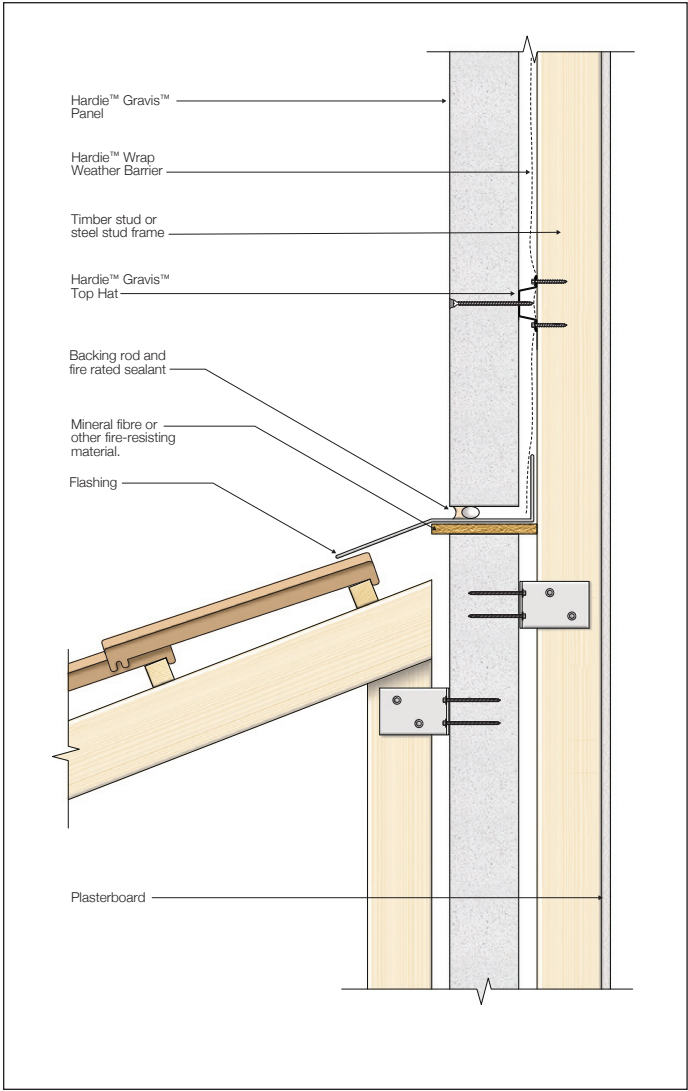


FIGURE 12 BLADE WALL JUNCTION FOR VERTICALLY ALIGNED INTERTENANCY DISCONTINUOUS WALL WITH EXTERNAL FC CLADDING



**FIGURE 13 STEP IN ROOF FOR VERTICALLY ALIGNED
INTERTENANCY DISCONTINUOUS WALL**

9 Product Information

Material

Hardie™ Gravis™ Panel is a **reinforced autoclaved aerated concrete (AAC)**, a form of lightweight concrete.

AAC is made from a mix of cement, sand, lime, gypsum, water, and an expanding agent. The mix is poured into molds, then **autoclaved** for increased performance. Hardie™ Gravis™ Panel conforms to the Australian Standard for Reinforced Autoclaved Concrete (AAC), AS 5146.

Durability

The overall durability of the system can be improved by adopting Class 4 corrosion-resistant fixings, applying supplementary protective coatings to steel elements, and ensuring all exposed sealants receive the appropriate finishing coats per the manufacturer's instructions.

It is the designer's responsibility to specify corrosion-resistant screws, top-hat battens, and other steel fittings that can withstand the environmental conditions and maintain structural performance throughout the project's design life.

Guidance for durability considerations may be drawn from the **ABCB Durability Guideline (2003), AS/NZS 2312:2002** for protective steel coatings, the AS 2331 corrosion-testing series, **AS 3566:2002** relating to corrosion-resistant fasteners, and **ISO 9223:1992**, which classifies atmospheric corrosivity for metallic materials.

Resistance to Fire

Hardie™ Gravis™ Panel can be exposed to fire loading originating from either external fire sources—such as adjacent structures, boundary fires, or bushfire conditions—or internal fire sources within the building itself. In situations where the wall assembly is required to achieve a specific Fire Resistance Level (FRL), the wall must be designed, detailed, and constructed using the appropriate system components and installation methods to ensure compliance with the nominated FRL rating.

This includes verifying that all elements of the system—such as framing, lining materials, fixings, penetrations, joints, and sealants—are compatible with the certified fire-tested configuration and are installed in accordance with the manufacturer's requirements and relevant fire engineering principles. Ensuring full alignment with the tested system is essential to maintain the wall's structural adequacy, integrity, and insulation performance under fire conditions.

Resistance to Termite Attack

Termite protection requirements differ across states and territories, and as such, the construction details provided in this guide do not attempt to address all possible scenarios. It is the builder's responsibility to ensure that the design and construction of the house comply with all relevant council requirements and the National Construction Code (NCC) for termite risk management. NCC Volume 2 outlines the applicable termite management provisions and references AS 3660 as the governing standard. Because Hardie™ Gravis™ Panel is resistant to damage from termites, they are well suited to use as part of a termite management system subject to that system being suitable for the specific project and compliant with the relevant requirements of the NCC.

Storage and Handling

To avoid damage, all Hardie™ products and accessories should be stored with edges and corners of the product protected from chipping. Hardie™ products and accessories must be installed in a dry state and protected from weather during transport and storage. The product must be laid flat under cover on a smooth level surface clear of the ground to avoid exposure to water, moisture, etc.

All design and construction must comply with the appropriate requirements of the current National Construction Code (NCC) and other applicable regulations and standards.



**For information and advice
call 13 11 03 | jameshardie.com.au**

Australia June 2026



© 2026 James Hardie Australia Pty Ltd ABN 12 084 635 558
™ and © denote a trademark or registered mark owned by James Hardie Technology Ltd or JH Research USA, LLC.
All trademarks, other than those owned by James Hardie Technology Ltd or JH Research USA, LLC, are property of
their respective owners.